



# PRECITECH 3.0

Precision Engineering, Machine Tools & Machining Technology Show

**4** **5** **6** **FEBRUARY 2026**  
WEDNESDAY THURSDAY FRIDAY

**AUTOCLUSTER EXHIBITION CENTRE  
PUNE**



**CKD**  
BUSINESS  
TECHNOLOGY

[www.ckdindia.org](http://www.ckdindia.org)

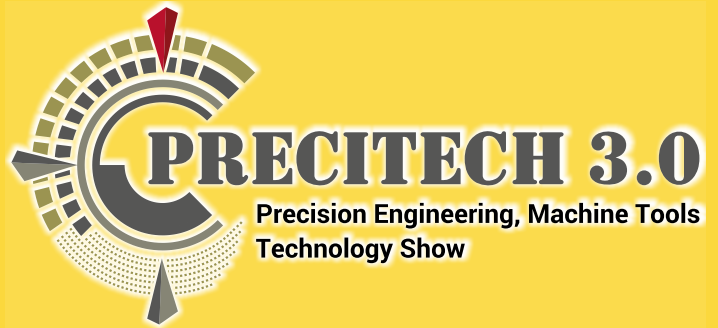
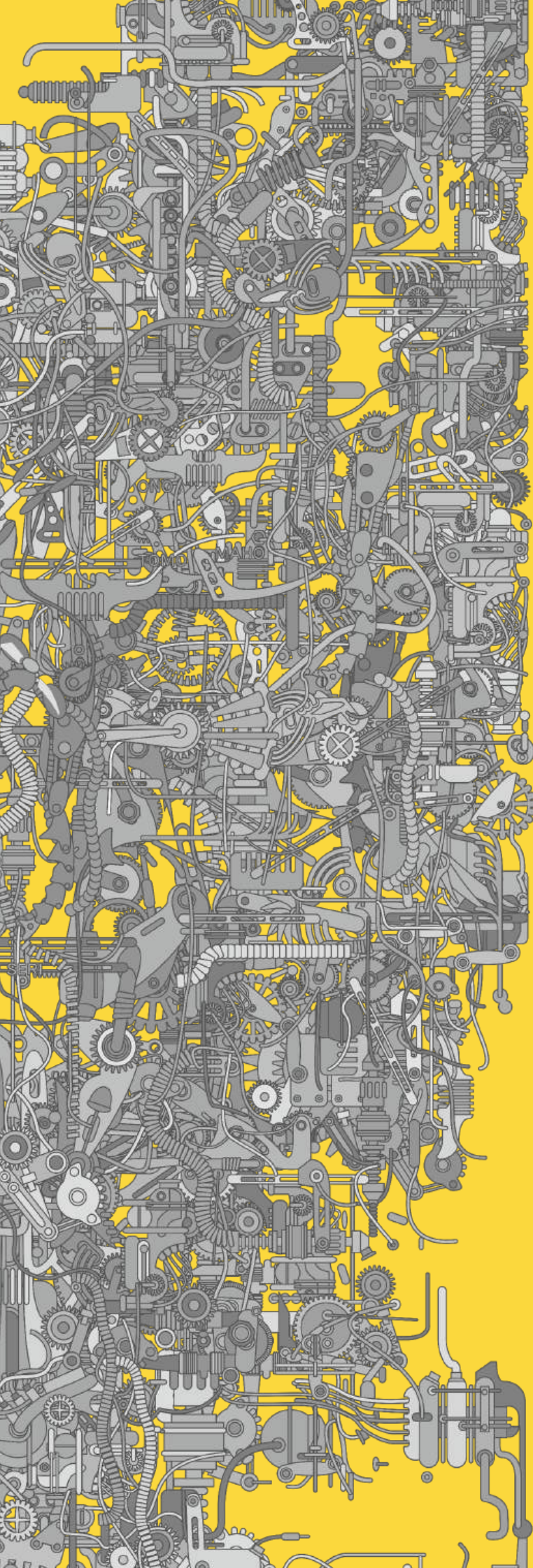


**BUSINESS  
MEET BUSINESS**  
MECHANICAL, ELECTRICAL, ENGINEERING TECHNOLOGY



**REPAIR  
MAINTENANCE**

Trusted window for Networking excellence



**PRECITECH: Empowering Manufacturing Excellence**  
Pioneering networking events for quality manufacturing sectors, PRECITECH champions "Precision Meets Performance, " This synergy yields outstanding results and accomplishments.

- Seamless integration of accuracy and effectiveness
- Technology transfer opportunities
- Collaborative discussions and idea-sharing
- Resource conservation

**Comprehensive Manufacturing Scope:**

- Advanced Manufacturing
- Intelligent Manufacturing
- Smart Manufacturing
- Ancillary industries
- Emerging technologies shaping the future manufacturing landscape

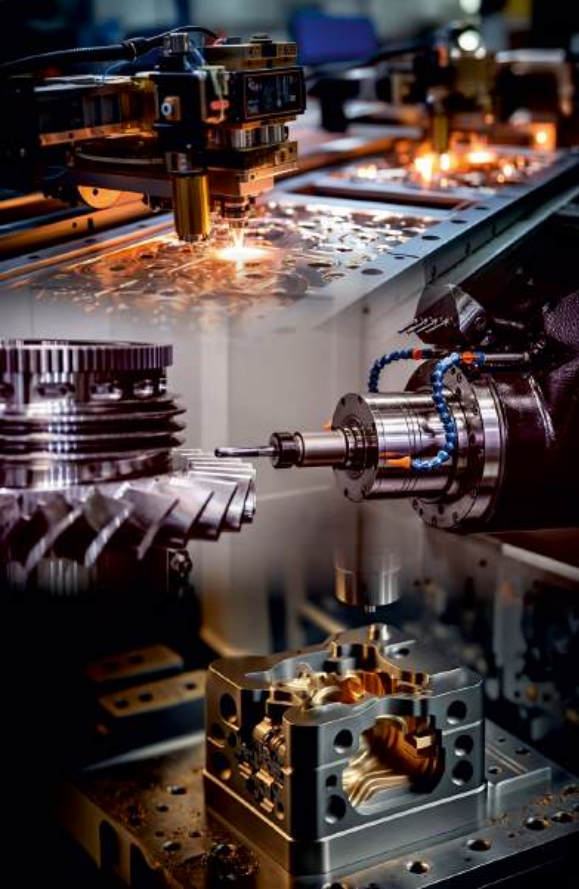
**India's Global Leadership, Rising Prominence:**

The global community recognizes India for precision engineering and calibrated technology, achieving optimal results in valued production. driving optimal results in valued production.

India supplies crafted components to:

- Aerospace & Defence (including engine & component manufacturing)
- Automobile & Automotive
- Energy - Power & Oil & Gas
- Medical & Pharma equipment's
- Construction equipment's
- Cutting Tools & Gear Components
- Tooling for Die-Mould, Hobbing, and more
- Ship & Submarine Engine Components
- Textile
- IT & Education

PRECITECH empowers industry professionals to leverage precision and performance, fostering excellence, greatness in manufacturing.



**METAL CUTTING:** Cutting tools, drills, inserts, tips, and materials such as carbide, tungsten, titanium and diamond, as well as specialized cutting tools and associated accessories. It also includes power and pneumatic air tools, tool and work holders, and a wide range of CNC machines, including MULTI-AXIS, VMC, HMC, wire-cut, EDM, hobbing, bevelling, grinding and abrasive tools machines.

**METAL FORMING:** A variety of processes and equipment, including laser marking, cutting, plasma cutting, welding, bending, power press and press brake, Punching machines, deburring, machines for product cleaning and finishing, coating equipment, and machinery for forging and die-casting.

**METROLOGY:** Covers a wide array of activities related to testing, measuring, inspection, including calibration, accuracy measurement, Coordinate Measuring Machine, mechatronics - mechanics, electrical, electronics, and computing to generate a simpler, more economical and reliable system. for measuring, and quality control.

**3D & ADDITIVE MANUFACTURERS:** Reverse engineering, section includes CAD/CAM software, 3D scanning and printing technology, additive manufacturing, as well as technologies for manufacturing polymers, composite materials, metals, and lightweight materials. Appropriate for Development & research, before production line.

**PRODUCT FINISHING:** A variety of processes, Ultra precision Grinding, Abrasive, Sand paper, Brush, Vibrating Screen, Metal treatment, Cleaning, Deburring, Drying, Polishing, Coating & Finishing.

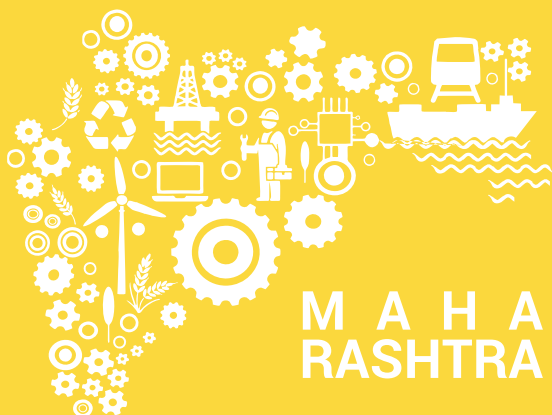
**CASTING AND FORGING, PRECISION INJECTION MOULDING (METAL):** A variety of processes and equipment, including Melting Casting, Cutting, machinery for forging and die-casting.

**AUTOMATION & ROBOTICS:** Motion engineering, drive and control systems, welding and material handling, power transmission, and applications in the most mechanised manufacturing improve production controls in major Industry vertical.

**FLUID POWER:** Hydraulic, pneumatic systems, air compressors, and vacuum, generators. Oil and Lubrication helps in Improving Production capacities.

**REPAIR & MAINTENANCE:** NDT, Inspection, Maintenance Tools, Contractors,

**PLANT & ASSET MANAGEMENT:** Research and development, training, logistics, and supply chain operations.



**Maharashtra's and Pune's industrial landscape:**

**Maharashtra:-** •Contributes 13% of India's industrial output •Business-friendly policies, robust infrastructure, and vast talent pool  
**Key manufacturing sectors:** Aero Engineering, Aerospace, Automobile, Automotive, Construction Equipments, Defence, Infrastructures, Gas, Medical, Textile, It and Education....

**Pune:-** •Emerged as manufacturing hub and smart machinery center •Driven by AI, quality production, time management, logistics •Auto cluster formation (Bhosari, Chakan, Pimpri-Chinchwad, Talegaon,) •Companies: Tata Motors, Bharat Forge, Kalyani Forge, Bajaj Auto, walchandnagar •Industrial growth extended to IT sector •Challenges: poverty, unique development trajectory •'Make In India', support for emerging businesses

**Key Players:**•DRDO •Dehu Road •Khadki Ordnance Factory •Bharat Forge •Kalyani Forge •Walchandnagar Industries •NIBE •Tata Advanced Technologies •Bajaj •Kirloskar •Larsen & Toubro •Mahindra and many more....



In the 1950s and 1960s, Pune transformed from a quiet town into an entrepreneurial hub, welcoming industries that shaped its identity. The emergence of the 'Auto cluster' around Bhosari, Chinchwad, Chakan and Talegaon, marked the city's industrial revolution, with companies like Bajaj Auto and Tata Motors leading the way. This growth spurred migration to Pimpri and Chinchwad, boosting real estate and prompting the formation of PCMC in 1982.

## COMMUNICATION - KNOWLEDGE - DELIVER BUSINESS TECHNOLOGY:

At CKD BUSINESS TECHNOLOGY, we have introduced an innovative concept to invigorate the Exhibition Industry with renewed enthusiasm and vigour. While products from well-known brands inherently possess value, channelling that value to meet the customer's specific desires requires meticulous planning. That's where CKD BUSINESS TECHNOLOGY serves as a valuable intermediary, bridging the gap between the product and the end-user.

PRECITECH will host over 350 exhibitors, both from national and international backgrounds. Beyond being a highly successful industrial exhibition showcasing cutting-edge technology, it also serves as a powerful platform for achieving the communication objectives of participants. Positioned prominently in the minds of the audience, which is substantial and industry-specific, PRECITECH plays a pivotal role in facilitating connections and knowledge exchange.

The 1960s to the early 2000s witnessed a trend of COEP engineers joining Pune industries. With the 1991 reforms, a shift toward research and development (R&D) occurred, driven by reduced red-tape and the need for innovation in the face of global competition. Indigenous R&D efforts became evident in product evolution, exemplified by Bajaj Chetak and Tata cars.

Pune's industrial success didn't stop there; it extended to the IT sector, further fueling the city's growth. However, challenges like poverty persist, and while a robust manufacturing sector could address these issues, India's unique development trajectory poses obstacles. Initiatives like 'Make In India' and support for emerging businesses are crucial for fostering a new revolution, empowering local manufacturing and contributing to India's accelerated development.

Additionally, DRDO, Dehu road, Khadki Ordnance factory, BHARAT Forge, Kalyani Forging, and Walchandnagar Industries, NIBE, TATA Advance Technologies, Bajaj, Kirloskar, Larsen & Toubro, Mahindra have played pivotal roles in defence manufacturing, enhancing Pune's industrial landscape. The giants in the automobile and automotive industry have not only attracted machining centres and ancillary units but also inspired machine makers to establish manufacturing setups, ensuring prompt delivery and immediate services in the thriving industrial ecosystem.

Aurangabad, Kolhapur, Mumbai, Navi Mumbai, Nashik, Nagpur, Thane, Uran is develop for various industry vertical

### FABRICATED STALL:

RS. 12,000 Per Sq. Mtr,  
12 Mtr. (4m x 3m) with Standard Facility  
(Front Maxima, Carpet, Name Fascia, 1-Table, 1- Round Table, 3-Chairs, 1-Plug, Single Phase 5/15, 4-Spot Light)

### BARE SPACE:

RS. 11,000 Per Sq. Mtr,. Exhibitors need to construct design stall (Refer Exhibitors manual for guideline).

### POSITION:

2 Side open (15 % Premium on Basic cost)  
3 Side open (20 % Premium on Basic cost)  
4 Side I-land (25 % Premium on Basic cost)

### ADDITIONAL FACILITY:

available at extra cost: Please refer exhibitors Manual.



**CKD**  
BUSINESS  
TECHNOLOGY

Tel: +91 7738586871  
email: sales@ckdindia.org  
[www.ckdindia.org](http://www.ckdindia.org)

GST No.:27AMMPS0638N2ZC

PAN No.: AMMPS0638N